

An Clamhan



ARRIVING BY CAR

We are on the B884 road to Glendale which passes through Colbost and runs along the shore of Loch Dunvegan, past An Clamhan, over the hill and through Glendale to Waterstein and Neist Point Lighthouse. Our timber clad house is on the left-hand side of the road just past The Three Chimneys restaurant and we are approximately five miles from the centre of Dunvegan village.

DIRECTIONS FROM SKYE BRIDGE

Follow the A87 trunk route through Broadford and onward as far as the distinctive Slighachan Hotel in the centre of the island. Take the left fork on to the A863 road to Dunvegan. On the outskirts of Dunvegan, where the streetlights begin, turn left onto the B884 to Glendale. You will not turn off the road again until you reach our house.

DIRECTIONS FROM PORTREE OR THE UIG FERRY TERMINAL

Take the A850 to Dunvegan and continue to the junction opposite the The Dunvegan (Previously The Dunvegan Hotel). Turn left and drive through the village. Just past the Post Office on the right and Old School Restaurant on the left, there is a right turn signposted for Glendale and Kinloch Campsite. Take this single-track road until you reach a junction facing a series of brown and white signs, one of which points right to The Three Chimneys on the B884, An Clamhan is some three miles further from this junction.

DIRECTIONS FROM ARMADALE, THE MALLAIG FERRY TERMINAL IN SLEAT.

Take the A851 to Broadford, join the A87 trunk road and proceed through the town. Follow directions as above for driving from the Skye Bridge.

GETTING TO SKYE

The journey to our island can be one of the most spectacular in the world - no matter which way you travel. Most visitors arrive by private car, crossing the Skye Bridge from the mainland at Kyle of Lochalsh. It takes about one hour to drive from the Skye Bridge to us.

GETTING TO SKYE BY ROAD

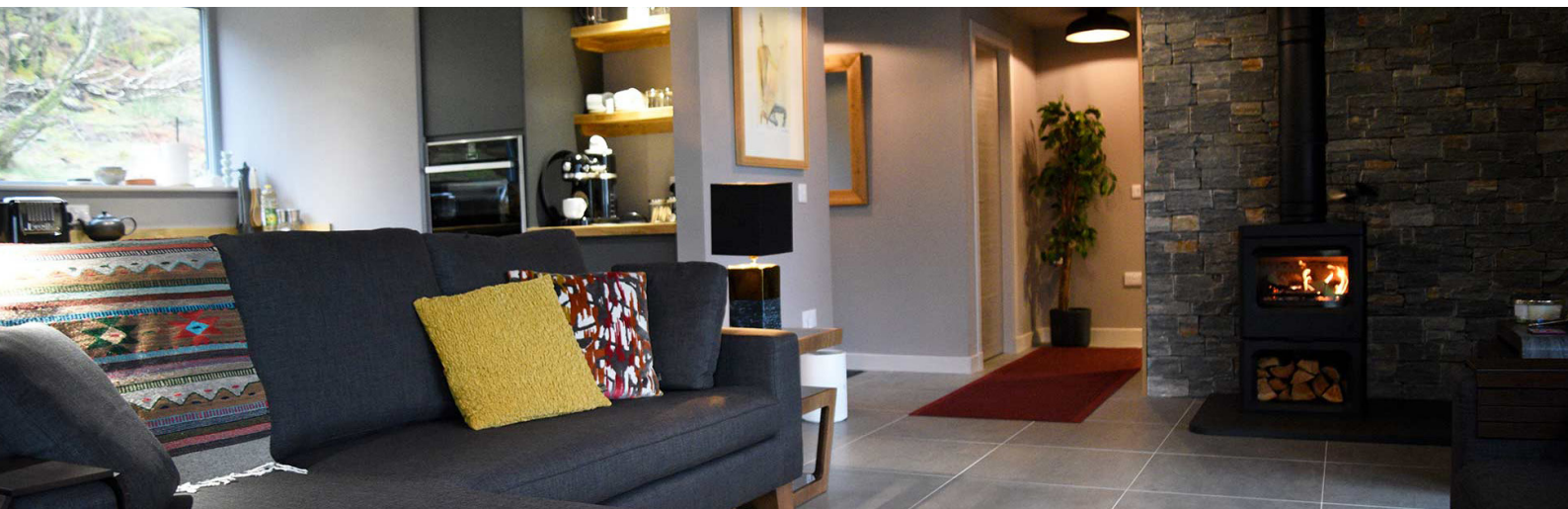
You reach Kyle of Lochalsh and the Skye Bridge via Fort William from Glasgow or Dalwhinnie from Edinburgh. The road journey from Edinburgh, Glasgow or Aberdeen can take up to six hours. From Inverness, the journey takes between two and a half and three hours via either Loch Ness or Achnasheen.

A note for sat nav users: Drivers using satellite navigation should note that many refer to the Caledonian MacBrayne car ferry crossing from the Port of Mallaig to Armadale on to the Isle of Skye as the most direct route. Now there is a crossing over the Skye Bridge, it's unnecessary to take this route and it's neither quicker nor more direct. We appreciate you may prefer to come over the sea to Skye, but please check the timetable in advance. The Mallaig ferry does not run a full service all-year-round. Booking in high summer is essential. The ferry can also be cancelled due to adverse weather conditions.

GETTING TO SKYE BY FERRY

Car ferries cross from Port of Mallaig to Armadale at the southern end of Skye. This service is limited during winter months and often very busy during the summer, when pre-booking is advisable.

There is also a small car ferry Glenelg on the mainland to Kylesha on Skye. The drive to Glenelg from Sheil Bridge off the A87, is spectacular, taking travellers over the Mam Ratagan Pass. This service runs from Easter to the end of October, or thereabouts. On Skye, Uig is the main ferry connection to and from Tarbert and Lochmaddy to Harris and North Uist in the Outer Hebrides.



GETTING TO SKYE BY TRAIN

Main line train services run from all major stations in the UK to Inverness and Fort William. It is possible to take the scenic railway from Inverness to Kyle of Lochalsh station, the nearest point to the island. There is also a connection from Fort William to Mallaig where the ferry service runs to Skye. This is a famous route and regarded as one of the most beautiful rail journeys in the World. There are no railways on the Isle of Skye.

GETTING TO SKYE BY PLANE

The nearest airport to the Isle of Skye is Inverness. It takes approximately three hours to drive from Inverness airport to An Clamhan, up to six hours from Glasgow, Edinburgh or Aberdeen airports.

GETTING TO SKYE BY CAR HIRE

Car hire is available from Inverness, Aberdeen, Edinburgh and Glasgow airports and Inverness or Fort William train station. It is also possible to hire cars from Kyle of Lochalsh and on the island itself, although this is a more limited service.

GETTING TO SKYE BY TAXIS

Taxis are available from all the main towns and villages on Skye, including a local service in Dunvegan. We can advise and provide telephone numbers.

GETTING TO SKYE BY BUSES

The bus service to Colbost is very limited, but there is a regular bus service between Portree and Dunvegan. The service between Dunvegan and Glendale that passes Colbost is infrequent. There are daily bus services and connections between Uig and Portree to Inverness, Edinburgh and Glasgow.

